



Your Solutions Provider



Jiffy Air Tool
2254 Conestoga Drive
Carson City NV 89706-0434 USA

US & Canada: 800-828-8665
International: 775-883-1072

www.jiffyairtool.com

Jiffy Air Tool History



Jiffy Headquarters & Manufacturing Facility
Carson City, NV USA



Your Solutions Provider!



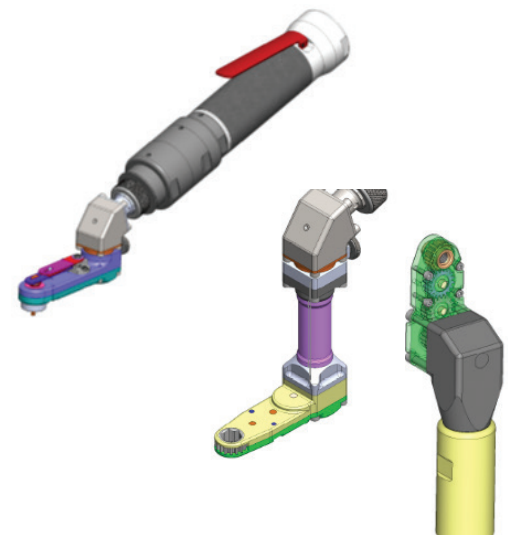
Jiffy Air Tool is an 80-year-old market leading solutions provider specializing in hand held, limited access, pneumatic drilling and fastener installation tools for the Aerospace and Aircraft industries. Jiffy Air Tool was founded in the 1940's to support a growing post war commercial aircraft industry in Southern California, later relocating in 1977 to our current facility in Carson City, NV.

Jiffy Air Tool offers an extensive line of specialty hand-held pneumatic tools for airframe assembly, maintenance, repair and overhaul facilities around the globe. Each tool provides hours of trouble-free operation to make the operator's job considerably easier. Designed and built to reach into difficult areas for all your "drill and fill" applications. "Simply put" preparation of holes and fastener installation for torque control plain nuts or Hi-Lok® type fasteners.

The Jiffy product line is designed, engineered, machined and assembled in Carson City, Nevada, USA. A top-notch quality product built to last with fantastic pricing is hard to beat. Team Jiffy is famous for their personal touch and speedy response time. This winning combination keeps our customers satisfied and coming back.

www.jiffyairtool.com

Manufacturing & Testing Equipment



Jiffy engineers can draw and 3D model attachments to assure fit for your specific applications.

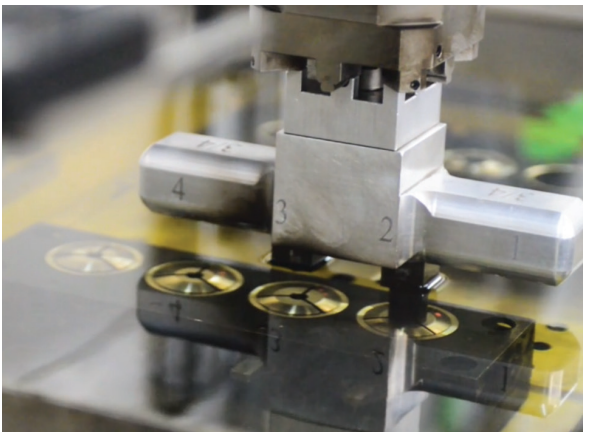
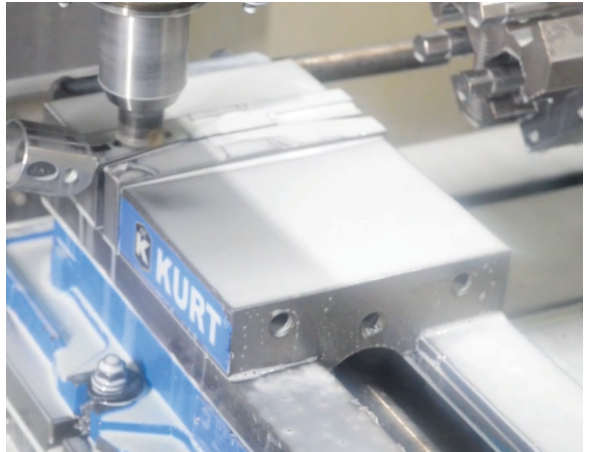
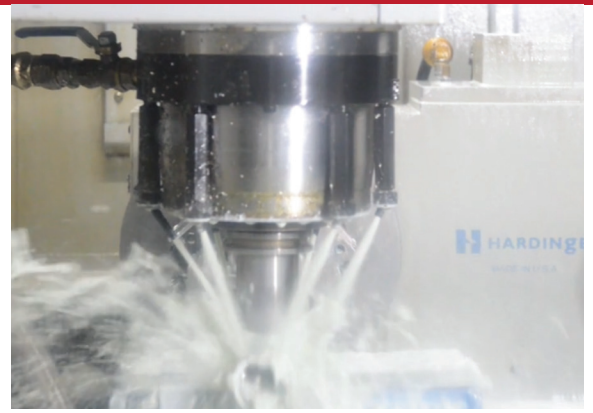
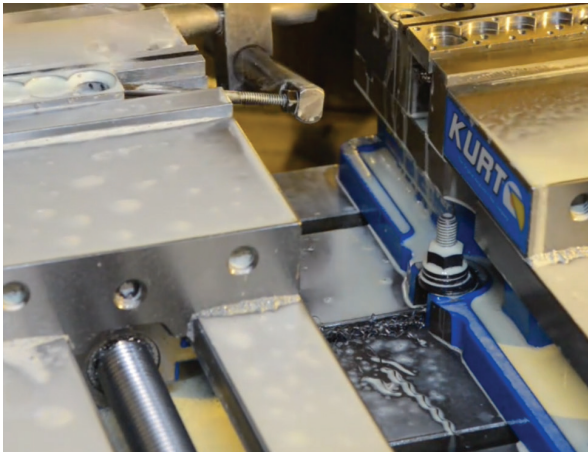
Aerospace demands for ultra-high performance materials led to the development of the C-type 18% nickel maraging tool steels. The strongest of this type of material is C-350 with a nominal ultimate tensile strength of 350 ksi or 350,000 pounds per square inch.

This material has higher strength and better wear properties than any material we have tested. All gears in Jiffy Air Tool attachments are made from this superior material.

You will find the same devotion to quality in all of our parts, housings made from A2, cover plates made from 1095 spring steel, and drive shafts made from chrome-moly tool steel. The limited space available for airframe assembly demands strong small tools and we pride ourselves in providing the tools that meet and exceed those demands.



Your Solutions Provider!



Jiffy doesn't just make promises to its customers, we strive to over-deliver. That is why every tool is meticulously hand assembled and tested to stricter requirements than our tools are expected to meet.



Modular Tool Platforms - Drilling



Jiffy Air Tool pioneered the “Modular Tool” platform for both drills (JMD) and Installation (JMI) motors and attachments. Utilizing this platform, Jiffy motors accept a wide variety of attachments to meet customers’ limited access requirements.

- Forward running, reverse running and reversible
- Straight Style and Safety Trigger Option Available
- Pistol Grip Style
- 250 – 20,000 RPM
- 0.3 – 1.5 HP

Available Thread Sizes: 1/4-28, 10-32, 9/32-40, 5/16-24, 3/8-24 and 7mm Collet



Your Solutions Provider!

Modular Tool Platforms - Fastener Installation



20° Hex Through

Straight Attachment

"L" Type

Jiffy also offers Modular Installation Tools. This platform permits the attachment of accessories to various offset or straight motors in horsepower and speed matched to the fastener specification.

Modular attachments are available in 17° Indexable or Fixed, 20° Indexable or Fixed, "L" Type Attachments, and Straight Install Attachments. We offer various series of the above mentioned attachments - the series correlated to the torque capacity of fastener.

To further the versatility of the attachments we offer three drive styles: A socket and key system, a flush gear with a key and a hex through with no key control to allow access to confined space installations.

In addition to the modular installation tools we also offer Ratchet Install Tools in Straight, 17° and 20° Head Styles with torque capacity to 400 in- lbs.

Modular .45 HP Drills (JMD) & Install Tools (JMI)



JMD Motors



JMI Motors



JMD Motors



SPECIFICATIONS

| Jiffy Model No. | Motor (HP) | Speed (RPM) | Length (IN) | Length (MM) | Weight (LBS) | Weight (KG) | Noise (dBA) | Air Cons. (CFM) | Vibration (m/sec ²) |
|----------------------------|------------|-------------|-------------|-------------|--------------|-------------|-------------|-----------------|---------------------------------|
| JMD PISTOL MOTORS | | | | | | | | | |
| 23722 | 0.45 | 500 | 5.08 | 129.0 | 1.38 | 0.63 | 77 | 22 | 1.98 |
| 23723 | 0.45 | 1,000 | 5.08 | 129.0 | 1.38 | 0.63 | 77 | 22 | 1.98 |
| 23724 | 0.45 | 2,400 | 4.57 | 116.1 | 1.27 | 0.58 | 77 | 22 | 1.98 |
| 23725 | 0.45 | 3,300 | 4.57 | 116.1 | 1.27 | 0.58 | 77 | 22 | 1.98 |
| 23726 | 0.45 | 4,500 | 4.57 | 116.1 | 1.27 | 0.58 | 77 | 22 | 1.98 |
| 23727 | 0.45 | 6,000 | 4.57 | 116.1 | 1.27 | 0.58 | 77 | 22 | 1.98 |
| JMD STRAIGHT MOTORS | | | | | | | | | |
| 24314 | 0.45 | 500 | 7.0 | 177.8 | 1.4 | 0.64 | 77 | 22 | 1.98 |
| 24315 | 0.45 | 1,000 | 7.0 | 177.8 | 1.4 | 0.64 | 77 | 22 | 1.98 |
| 24316 | 0.45 | 2,400 | 6.1 | 154.9 | 1.25 | 0.57 | 77 | 22 | 1.98 |
| 24317 | 0.45 | 3,300 | 6.1 | 154.9 | 1.25 | 0.57 | 77 | 22 | 1.98 |
| 24318 | 0.45 | 4,500 | 6.1 | 154.9 | 1.25 | 0.57 | 77 | 22 | 1.98 |
| 24319 | 0.45 | 6,000 | 6.1 | 154.9 | 1.25 | 0.57 | 77 | 22 | 1.98 |
| JMI PISTOL MOTORS | | | | | | | | | |
| 23731 | 0.45 | 250 | 5.08 | 129.0 | 1.38 | 0.63 | 77 | 22 | 1.98 |
| 23732 | 0.45 | 500 | 5.08 | 129.0 | 1.38 | 0.63 | 77 | 22 | 1.98 |
| JMI STRAIGHT MOTORS | | | | | | | | | |
| 24323 | 0.45 | 250 | 6.1 | 154.9 | 1.38 | 0.63 | 77 | 22 | 1.98 |
| 24324 | 0.45 | 500 | 6.1 | 154.9 | 1.38 | 0.63 | 77 | 22 | 1.98 |

- Features powerful .45 HP lubrication free motor
- 6 Speed ranges to cover all material requirements
- Titanium gear case reduces weight and adds durability
- Patented through-handle exhaust improves work environment
- Fully ported throttle valve for unmatched speed control
- Complete housing over-mold insulates handle while reducing grip force
- Can accommodate most drilling attachments



Your Solutions Provider!



SPECIFICATIONS

| Jiffy Model No. | Motor (HP) | Speed (RPM) | Length (IN) | Length (MM) | Weight (LBS) | Weight (KG) | Noise (dBA) | Air Cons. (CFM) |
|-----------------|------------|-------------|-------------|-------------|--------------|-------------|-------------|-----------------|
| 23210 | 0.45 | 500 | 5.7 | 144.8 | 1.5 | .68 | 77 | 22 |
| 23211 | 0.45 | 1,000 | 5.7 | 144.8 | 1.5 | .68 | 77 | 22 |
| 23212 | 0.45 | 2,400 | 5.4 | 137.2 | 1.4 | .64 | 77 | 22 |
| 23213 | 0.45 | 3,300 | 5.4 | 137.2 | 1.4 | .64 | 77 | 22 |
| 23214 | 0.45 | 4,500 | 5.4 | 137.2 | 1.4 | .64 | 77 | 22 |
| 23215 | 0.45 | 6,000 | 5.4 | 137.2 | 1.4 | .64 | 77 | 22 |

Rec Air Pressure: 90 PSI - 6.2 Bar 1/4-in. Air Inlet Rec. Hose Size 3/8-in. I.D.

Jiffy Palm Drills are supplied without chuck. If a drill chuck is required, please specify when ordering.

- Powerful .45 HP lubrication free motor
- 6 Speed ranges to cover all material requirements
- Titanium gear case reduces weight and adds durability
- Patented through-handle exhaust improves work environment
- Fully ported throttle valve for unmatched speed control
- Complete housing over-mold insulates hand while reducing grip force

Torque Control Tools-Straight



■ SPECIFICATIONS

| MODEL NO. | FREE SPEED (RPM) | TORQUE RANGE (IN-LBS) | TORQUE RANGE (N.m) | LENGTH (IN) | LENGTH (MM) | WEIGHT (LB) | WEIGHT (KG) | AIR INLET (IN) |
|-----------|------------------|-----------------------|--------------------|-------------|-------------|-------------|-------------|----------------|
| 23541 | 380 | 15-45 | 1.7-5.1 | 13 | 330.2 | 2.5 | 1.1 | 1/4 |
| 23542 | 250 | 35-80 | 4 - 9 | 13 | 330.2 | 2.5 | 1.1 | 1/4 |
| 23550 | 300 | 70-110 | 7.9 - 12.4 | 14.5 | 368.3 | 3.8 | 1.7 | 1/4 |
| 23553 | 210 | 100-180 | 11.3 - 20.3 | 14.5 | 368.3 | 3.8 | 1.7 | 1/4 |
| 23556 | 160 | 165-300 | 18.6 - 33.7 | 16 | 406.4 | 4.5 | 2.0 | 1/4 |

Jiffy® Torque Control Straight Hi-Lok® Motors

- Jiffy® has expanded its line of precision torque control shut-off tools. Models available include straight and offset designs.
- These units are designed for fasteners requiring a precise yet repeatable torque with minimal torque reaction.
- Models are tested to Six Sigma torque standards.



Your Solutions Provider!

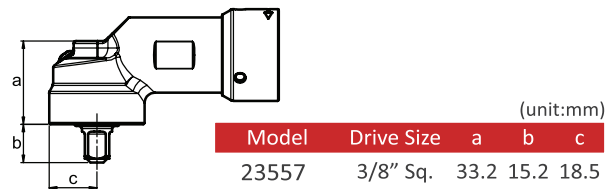
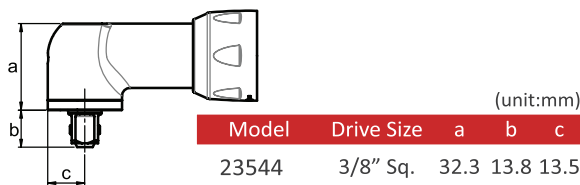
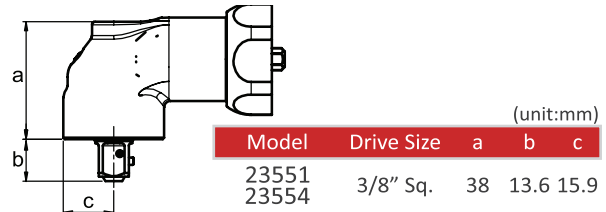
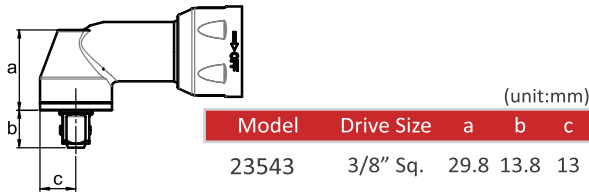
Torque Control Offset Air Motors



■ SPECIFICATIONS

| MODEL NO. | DRIVE SIZE | FREE SPEED (RPM) | TORQUE RANGE (IN-LBS) | TORQUE RANGE (N.m) | WEIGHT (LB) | WEIGHT (KG) | AIR INLET (IN) | NOISE LEVEL dB(A) |
|-----------|------------|------------------|-----------------------|--------------------|-------------|-------------|----------------|-------------------|
| 23571 | 1/4" Hex | 250 | 15-45 | 1.7-5.1 | 2.53 | 1.15 | 1/4 | 75 |
| 23572 | 1/4" Hex | 250 | 35-80 | 4 - 9 | 2.64 | 1.20 | 1/4 | 75 |
| 23573 | 1/4" Hex | 310 | 70-110 | 7.9 - 12.4 | 2.64 | 1.20 | 1/4 | 85 |
| 23574 | 1/4" Hex | 220 | 100-180 | 11.3 - 20.3 | 3.10 | 1.40 | 1/4 | 85 |
| 23575 | 1/4" Hex | 160 | 165-300 | 18.6 - 33.7 | 3.50 | 1.45 | 1/4 | 85 |

Aviation Grade Angle Nutrunners



SPECIFICATIONS

| Jiffy Model | Drive Size | Screw Size | Torque Range | | Free Speed | Weight | | Tool Diameter | | Tool Length | | Air Inlet | Noise Level |
|-------------|------------|------------|--------------|----------|------------|--------|------|---------------|----|-------------|-----|-----------|-------------|
| | inch | mm | in-lb | N.m | rpm | lb | kg | inch | mm | inch | mm | inch | dB(A) |
| 23543* | 3/8" Sq. | M5 | 18 - 53 | 2 - 6 | 300 | 2.57 | 1.17 | 1.53 | 39 | 12.5 | 318 | 1/4" | 75 |
| 23544* | 3/8" Sq. | M5 - M6 | 20 - 115 | 2.2 - 13 | 160 | 3.03 | 1.38 | 1.53 | 39 | 13.8 | 351 | 1/4" | 75 |
| 23551 | 3/8" Sq. | M6 | 80 - 140 | 9 - 16 | 220 | 3.96 | 1.8 | 1.77 | 45 | 14.5 | 369 | 1/4" | 80 |
| 23554 | 3/8" Sq. | M8 | 125 - 220 | 14 - 25 | 150 | 3.96 | 1.8 | 1.77 | 45 | 14.5 | 369 | 1/4" | 80 |
| 23557 | 3/8" Sq. | M10 | 215 - 400 | 24 - 45 | 110 | 4.62 | 2.1 | 1.77 | 45 | 16.1 | 411 | 1/4" | 80 |

* Available with 1/4" Sq. Drive

Max. Air Pressure: 90 PSI (6.3kg/cm²) / 0.63Mpa

Air Hose Size: 3/8"

Jiffy Angle Nutrunners

- We have expanded our product line to include precision angle nutrunners with torque ranges from 18-400 in-lbs. These units are tested to Six Sigma torque standards.
- Adjustable shut-off clutch provides precise torque repeatability.
- Tools feature a soft grip over mold that provides comfort while reducing grip force. All models have contoured lever throttles and rear exhaust.



Your Solutions Provider!

Customized Drill & Installation Kits

KT-276



KT-132A

Combine motors with different drill and installation attachments to customize a kit for your application.

- Lower total cost, greater flexibility
- Wide variety of attachments to fit different applications
- High-impact durable case to fit and organize motors and attachments
- Metal name plates, listing kit numbers and all components
- Flash drive with kit information and parts breakdown

Customized Removal Kits



KT-432



KT-379



KT-378-1



Jiffy® is now introducing Hi-Lok® Removal Kits for use in removing Hi-Lok®, Hi-Lite®, Eddie Bolt® and Huck threaded collars.

Kits are available using the Jiffy® 17° Indexable Attachment and Straight Motor Model KT379 or the L-Type Attachment and Offset motor Model KT378-1.

The innovative sockets feature a conical / tapered shape with helical teeth to grip and remove the collar without jamming the collar into the socket. This kit is suitable for use on aluminum, steel, titanium and all coated collars. The Jiffy® Hi-Lok® Removal Kits will allow operators to remove collars significantly faster, while reducing damage and maintaining pin integrity.



Your Solutions Provider!

Jiffy Air Tool Customers



Jiffy Air Tool's reward for Excellence.



HEADQUARTERS

Jiffy Air Tool
2254 Conestoga Drive
Carson City NV 89706-0434 USA
Tel. US & Canada: 800-828-8665
Tel. International: 775-883-1072
sales@jiffyairtool.com

EUROPE

Jiffy Air Tool
Unit 8 Lane End Industrial Park
High Wycombe
Bucks HP143By United Kingdom

Tel. Europe: +49 163 255 48 69
derya@jiffyairtool.com

